

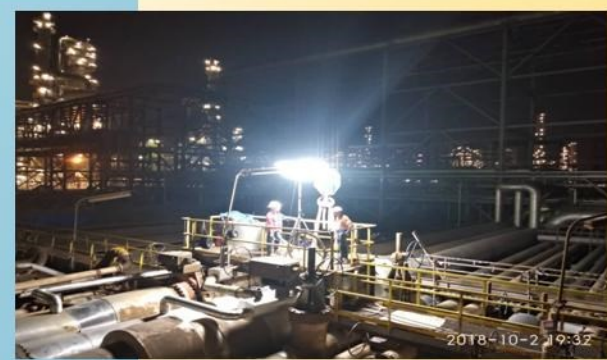
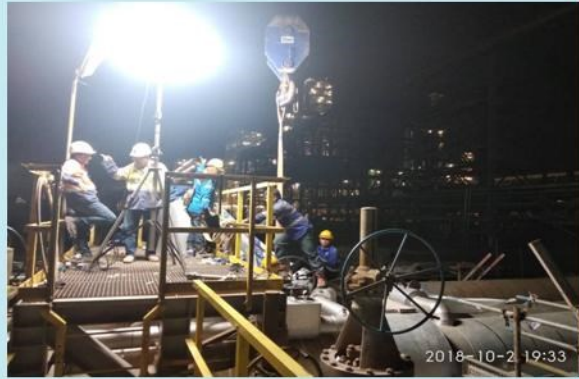
Emergency Lighting Solutions NC LED Balloon Tower Light

Safety, Rescue & Security

Our glare-free balloon lighting system was designed for the construction industry and is ideal for paving machines, emergency response vehicles or utility trucks. Adding safety with visibility....

nura[®]
YOUR PREFERRED SERVICE PROVIDER

Safety, Rescue & Security



Higher Efficiency

- Energy efficient and Eco-friendly.
- Quick Setup in emergency situations.

Safer for traffic

- Less car accidents
- Glare-free light for drivers

Safer for workers

- Less accidents at work
- Excellent visibility in the work environment

Emergency Lighting Solutions
NC LED Balloon Tower Light
 Safety, Rescue & Security

nura[®]
 YOUR PREFERRED SERVICE PROVIDER



LED BALLOON LIGHT
GIANT
500W

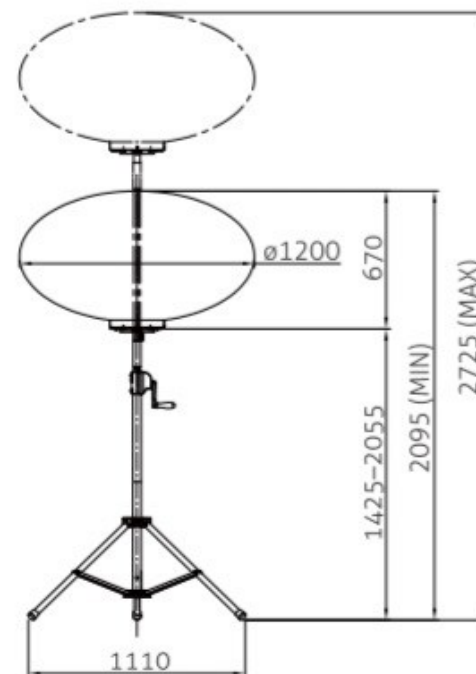
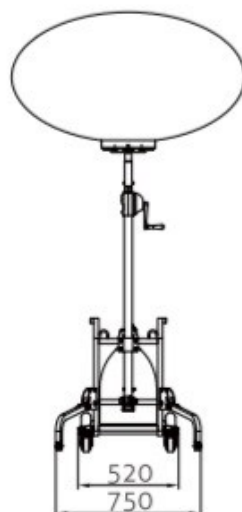
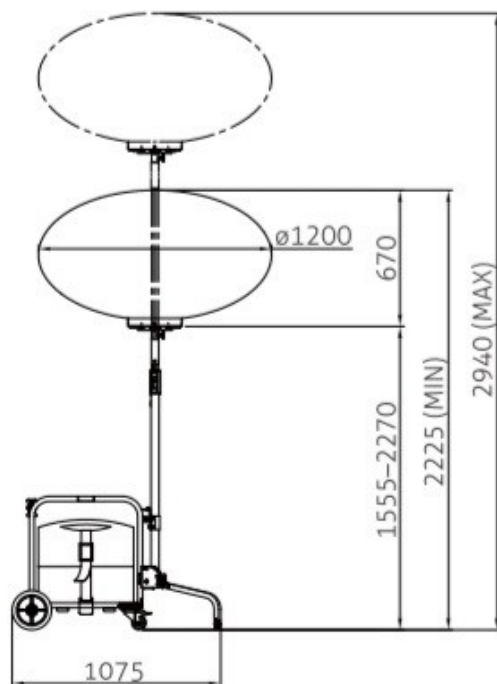
Features

62,400 Lm
130 Lm/W

- GLARE FREE LIGHTING INCREASES PERSONAL SAFETY AND WORKER COMFORT IN DARK PLACE.
- WILD AREA COVERAGE BY 360 DEGREE ILLUMINATION.
- WITH LED PANELS AND A BLOWER INSIDE TO EXHAUST HEAT FOR A LONG PERIOD OF TIME USE.
- LONG LIFESPAN AND ENERGY SAVING COMPARED TO HID LIGHT.
- ADJUSTABLE LIGHT ANGLE AND FULL/HALF LIGHT SWITCH FOR DIFFERENT NEEDS.
- POSSIBLE TO MOUNT TRIPOD OR TROLLEY.
- COMPACT, EASY TO TRANSPORT BY MULTIPLE UNITS.



Dimension



**LED BALLOON
 LIGHT
 GIANT
 BL00A006**

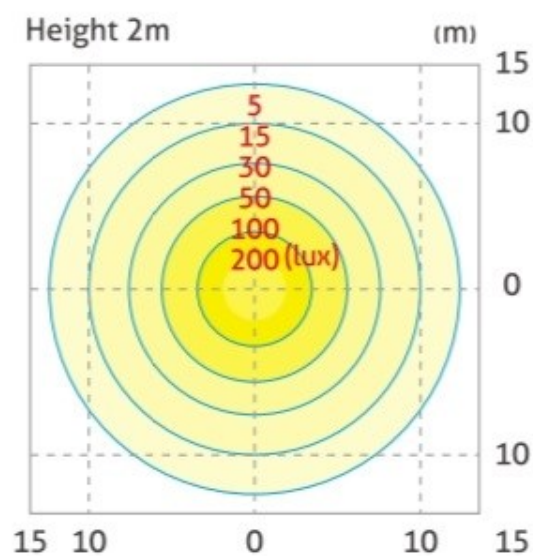
unit : mm

Emergency Lighting Solutions
NC LED Balloon Tower Light
 Safety, Rescue & Security

nura[®]
 YOUR PREFERRED SERVICE PROVIDER

**PORTABLE & MULTIPURPOSE
 ECO FRIENDLY
 14 OPERATING HOURS***

Polar diagram (lux)

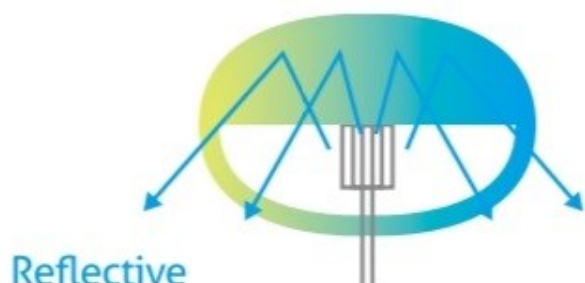


**WIDE AREA
 COVERAGE BY
 360 DEGREE
 ILLUMINATION.**

International Certification



Application



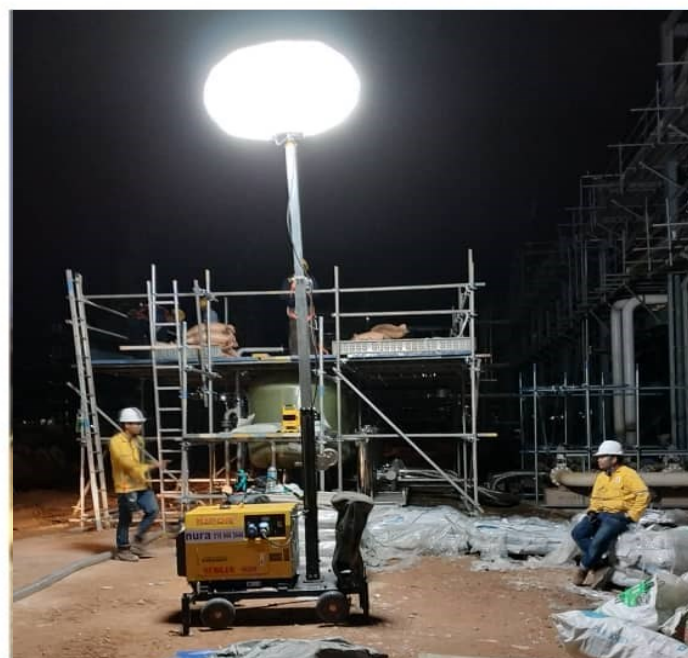
Reflective
 Light Cover

Reflective Light Cover
 -Focus lighting to the ground.
 -High efficiency.



Normal
 Light Cover

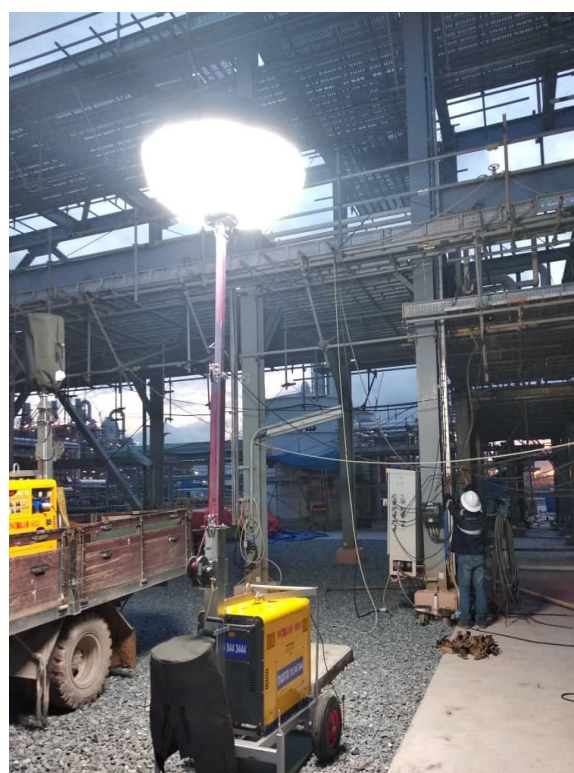
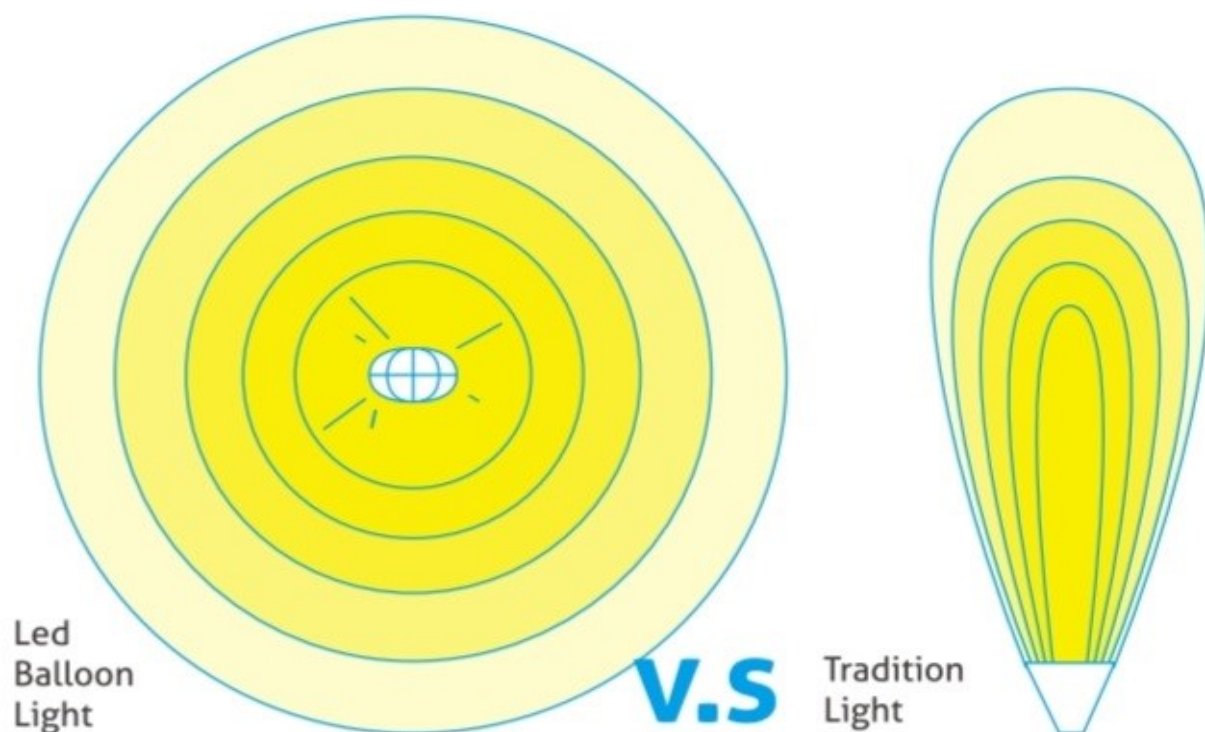
Balloon Light Cover
 -Washable and replaceable.
 -Tear, heat and weathering resistant polyester.



2018-10-2 19:32

Emergency Lighting Solutions
NC LED Balloon Tower Light
 Safety, Rescue & Security

nura[®]
 YOUR PREFERRED SERVICE PROVIDER



Specifications & Technical Data :

Model :	NC LED Balloon Lightning Tower		
Frequency (Hz)	50/60 Hz		
Rated Power	50 Hz: 4.5kW (4.5 kVA) / 60 Hz: 5kW (5kVA)		
Rated Voltage	115/230 V or 240V		
Engine type	KM186FAGET		
Starter system	12V Electric system		
Noise level (7m)	72 dB (A)		
Dimension (L x W x H) mm	910 x 530 x 740 mm		
Mast Height (Full Extended)	5m		
Weight	285 KG		
Power Consumption (W)	260W (Half Light) / 500W (Full Light)		
Operating Amperage (A)	2.5 (Half Light) / 5.0 (Full Light)		
Lamp	Panel	Type	LED
		Power Consumption (W)	240W (Half light) / 4800W (Full light)
		Luminous Flux (lm)	31,200lm (Half light) / 62,400lm (Full light)
	Fan	Voltage (V)	DC 24V
		Operating Amperage (A)	0.52A
	Size	Dimension (mm)	1200
		Height (mm)	670
	Fuel Tank Capacity		15 L
Fuel Tank Operating Hours		14 Hours	

Common application :Road construction | Security checkpoints |
Emergency repairs | Farming and ranching | Disaster response |
Search and recue |Special events

Safety, Rescue & Security

FUEL COMPSUMPTION : **10** LITER
LAST FOR **12** RUNNING HOURS !

LESS THAN 1 LITER PER HOUR !

