

SCRAPER MAT

PVC Normal Duty Coil Mat

Features :

- Remove dirt and moisture from shoes
- Easy and inexpensive to maintain. Just shake, vacuum or rinse out.
- Thickness : 13mm Material is PVC with PVC foam backing
- Custom logo & wording are available
- Also available in custom cut sizes and lengths

PVC Extra Heavy Duty Coil Mat

Features :

- Heavy Duty Vinyl Loops, Durable, long-lasting
- Scrape dirt and grime off shoes and boots
- Unbacked, Open Construction: - Allows dirt and moisture to pass through for easy clean up
- Thickness : 16mm Material is PVC Unbacked
- Available in custom cut sizes and lengths
- Also Custom logo & wording are available

3M6050 Cushion Nomad Matting

Features :

- Excellent dirt removal and holding capability
- Thickness is 11mm, Material is PVC
- Easy to clean - simply turn it over, shake, vacuum, or rinse out dirt, grime and moisture
- Ideal for medium traffic volumes and general interior usage
- Available in custom cut sizes and lengths
- Also Custom logo & wording are available

PVC Standard Coil Mat Plain/Welcome

Features :

- Remove dirt and moisture from shoes
- Easy and inexpensive to maintain. Just shake, vacuum or rinse out.
- Thickness : 13mm Material is PVC with embossed edging
- Size : 2'x3' / 3'x4' / 3'x5' / 4'x6'

Applications Suitable for halls, interiors, walkways, interior of elevators, recessed wells, entrances/exits or doorstep of carpeted rooms of low to medium traffic volume

WIPER & SCRAPER MAT

Needle Rib Mat

Features :

- Deep Ribbed surface brushes, channels and traps dirt for superior floor protection.
- Thickness: 3/8" (9.5mm) Material is 100% polypropylene needle punched fibres with vinyl backing.
- Solid vinyl backing reduces mat movement and protects the floor
- Easy to clean - vacuum, sweep or hose down
- Rubber edging is optional
- Available in custom cut sizes and lengths
- Also available in customized wording and logo

EH4000 Carpet Nomad Matting

Features :

- The dual-fiber construction eliminates and hides dirt and moisture
- Thickness is 5/16" Material is resilient vinyl loop construction with vinyl backing.
- Flexion Vinyl backing won't stain the floor and helps prevent dirt and moisture from reaching the floor underneath
- Attractive, popular ribbed design with dual fiber matting
- Performance for excellent dirt and water removal
- Rubber edging is optional
- Available in custom cut sizes and lengths
- Also available in customized wording and logo

Applications

Main Entrance , Inside Building Entrance , Hallway Areas , Interior Walkways , Toilet Entrance

WaterHog Eco Elite Roll Goods

Features :

- 30 oz. sq/yd PET fabric (100% post-consumer recycled from plastic)
- Thickness is 3/8" Material is 100% post-consumer PET Polyester fiber with SBR rubber backing contains 20% post-consumer recycled rubber
- Reinforced bi-level WaterHog construction effectively allows dirt and moisture to be filtered at the door and contained in the base of the mat, away from foot traffic
- Every square foot of a Waterhog Eco mat eliminates 4 half liter plastic bottles from the waste stream
- Available in custom cut sizes and lengths

Applications

Large entrance areas up to 12 x 50 foot, Irregularly shaped entrance areas, Mat recesses / wells, Corridors, runs and walkways, Retail, Hotels and Leisure, Commercial buildings, Offices (Heavy traffic use)

ANTI SLIP MAT

ECO PVC Interlocking Mat TM

Features :

- Modular Interlocking mats, effective in concealing dust, will not turn mouldy
- 100% injection molded PVC drain through tile
- Size is 1ft x 1ft Material is PVC ,16 cellular square open grid with anti-slip grip top design
- Solid backing not hiding water, no bacterial so no bad smell
- Waterproof, non-skid, Durable, Anti fungus, High temperature resistant
- Provides effective slip resistance in the bathroom
- Durable, Lasting and easy maintenance
- Easy to apply or remove with high quality environmentally friendly material

ECO Edge Joint

Features

- Length is 30cm Material is PVC ,1 set come with female edge and male edge.
- This durable transition edge kit is easy to install with no tools necessary.
- Improve aesthetics and greatly reduce potential tripping hazards.

Applications

Changing room, Bathroom, Toilets, Swimming pools, Spa, Wet areas ,Locker Rooms, Leisure Centres,etc
Requires a drain-through matting system (not recommended for outdoor as colours may fade due to the sun)

Anti Slip Mat Wet Area

Features

- Z-web design provides uniform foot support
- Durable-won't flatten over time
- Open construction allows water to drain through helping keep surfaces drier
- Enhance slip resistance, helping reduce falls
- Thickness is 4.5mm Material is PVC .
- Size: 1.2m x 15m . Available in custom cut lengths.
- UV Stable, Strong Lasting, Heavy Duty

TM Toilet Mat

Features

- Modular interlocking anti slip mat suitable for any size areas.
- Prevent slips and falls with its-special mat which allows maximum
- Size is 1ft x 1ft Material is PVC
- Color is Maroon,Dark Blue,Gren,Grey & Black

Applications

Wet and slippery areas, Barefoot Traffic Areas, Around Pools and Saunas, Locker Rooms, Grocery Store Produce Areas, Locker Rooms, Shower Areas and Washroom,etc.

ANTI FATIGUE MAT

Tuff Spun Anti Fatigue Mat

Features :

- Closed cell PVC sponge matting offers comfortable and economical fatigue relief
- Foam construct helps reduce employee fatigue and improve worker productivity.
- Thickness is 9.5mm (3/8") Material is Closed cell PVC Foam
- Also available in custom cut sizes and lengths
- Beveled edges help reduce tripping
- Reduces impact noise.
- Our pebble surface is quite smooth and soft to the touch,simple sweep or wipe away grime for easy maintenance.
- Rubber edging is optional.

ESD Anti Fatigue Anti Static Mat

Features :

- Is suitable for assembly lines and other workplaces to reduce individual worker's fatigue from long - standing jobs
- Thickness is 12.5mm Size is 2ft x 3ft & 4ft x 6ft
- Durable, slip-resistant resists most common fluids and chemicals. Black with high visibility yellow stripe border
- Deck plate matting top surface is easy to clean and will not get clogged with dirt.
- Industrial grade,thick, black,sponge base enhances employee productivity and relieves fatigue.
- Beveled edging on all four sides reduces trip hazards.
- Suitable for anti-static area (especially the ground) the transformation of the economy a simple and effective anti-static anti-fatigue measures

Comfort Flow Mat

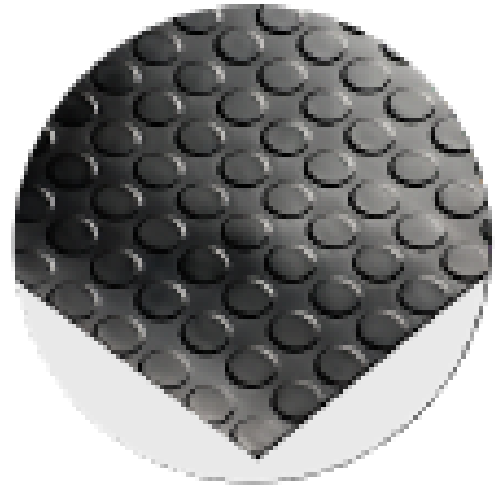
Features :

- High density closed-cell nitrile rubber cushion provides excellent anti-fatigue properties
- Thickness is 9.50mm(3/8") Size is 3ft x 5ft
- Chemical resistant, grease and oil resistant
- Drainage holes allow liquids to flow through
- Welding safe and static dissipative
- Beveled edges provide a safe transition from mat to floor
- Lifetime anti-microbial treatment prevents odors and degradation of the mat
- Light weight and flexible for easy handling and cleaning
- Recommended for kitchen and industrial applications

Applications

Ideal for use In heavy-duty environments,electronic manufacturing, pharmaceutical,Plants, clean Rooms, fiber Optics, electronic assembly, electronic warehousing, circuit assembly, aerospace and hospitals

SAFETY MAT



Rubber Studded Mat

Features :

- Provides a Durable Attractive Hardwearing Floor Surface
- Thickness is 3mm & 4.5mm
- Roll size is 1m x 10m (4.5mm only) & 1.2m x 10m
- Available in custom cut lengths.
- Material is Natural/Synthetic Rubber
- Anti-static and Sound Absorbent
- Designed to Protect Floor Surfaces
- Tough , long lasting and Anti Slip
- Chemical, Cigarette Burn & Slip Resistant
- Applied by Adhesion to Floor
- Rubber Edging is optional on custom cut only.

Rubber Studded Tiles

Features :

- Provides a Durable Attractive Hardwearing Floor Surface
- Thickness is 4.5mm Size is 2ft x 2ft (60cm x 60cm)
- Material is Natural/Synthetic Rubber
- Anti-static and Sound Absorbent
- Designed to Protect Floor Surfaces
- Tough , long lasting and Anti Slip
- Chemical, Cigarette Burn & Slip Resistant
- Applied by Adhesion to Floor

Applications

Gym Floor, Laboratories, Bars, Elevators and Walkways, Hallways, Corridors, High Traffic Areas, Industrial & Automation Pathways, Heavy Duty Work Place, Wet & Dry Area, Production Floor Slip Coverage, Shipping & Packaging Areas, etc.

Diamond Plate Rubber Roll

Features :

- Protecting floor surfaces or industrial equipment
- Thickness is 3mm Roll size is 1.2m x 10m. Available in custom cut lengths.
- Material is Natural/Synthetic Rubber
- Has been used in many industrial working areas. Perfect for work surfaces
- Designed to prevent slips or to be resistant to slip
- Can used on the interior of vehicles or trailers
- water-resistant and long-lasting quality material.
- Lightweight and flexible
- Affordable rubber mat with excellent durability indoor
- It is ready to use, don't need any glue as the floor adhesive

Applications

Treadmill mats, non-slip mats, safety mats for kitchens, gym mats, kennel mats, residential garages floor covering, or utility mat

SAFETY MAT



Safe Walk Light

Features :

- Lightweight, non slip anti-fatigue mat features moulded beveled edging for added safety
- Drainage holes allow liquids and waste to pass through matting
- Thickness is 12mm Size is 3ft x 5ft
- Material is high quality recycle rubber.
- Flexible, rubber floor matting with cylindrical holes, improve drainage by allowing residue to pass through without debris clogging and harboring germs.
- Provided Safety, Reduces Accidents & Increases Performance



Interlocking Safe Walk Light

Features :

- Lightweight, non slip anti-fatigue mat features moulded beveled edging for added safety
- Drainage holes allow liquids and waste to pass through matting
- Thickness is 12mm Size is 3ft x 3ft
- Material is high quality recycle rubber.
- Flexible, rubber floor matting with cylindrical holes, improve drainage by allowing residue to pass through without debris clogging and harboring germs.
- Provided safety, reduces accidents & Increases Performance

Applications

Kitchens, Bar Counter Floors, Industrial Work Stations, Dishwashing Areas, Packaging Area, Assembly Lines. Area subject to liquids, fats, grease, oil, long hour standing, chemicals etc.



Safety Scrape Mat

Features :

- Thickness is 6mm Size is 3ft x 5ft
- Is the perfect non slip mat for wet & greasy food service or industrial areas.
- Aggressive nitrile rubber grip runner.
- Raised "gripper" surface pattern provides excellent traction in slippery areas
- The molded grip - surface cleats effectively scrapes tough dirt and grime off shoes and provides an excellent anti-slip surface.
- Durable nitrile rubber construction for oil and general chemicals resistance.
- The cleated backing increases grip with the floor to help prevent sliding ground.

Application :

Kitchens, Locker Rooms, Restaurants, Production Areas, Outside Entrances, Behind Lounge Counters & Bars, Slippery Inclines And Grocery Store Produce Areas, Boats.

DUST CONTROL MAT

SPECIALITY MAT

USA Dust Control Mat *Machine Wash*

Features :

- High twist, heat-set solution dyed nylon yarn resists crushing, traps dirt and extends performance life of the mat
- Thickness is 9.5mm (3/8")
- Standard size 2' x 3'3/4' x 5'1/4' x 6'1/4' x 8'1/4' x 12'
- Available in custom cut lengths.
- Material: High twist, heat-set solution dyed nylon yarn with 100% Nitrile rubber backing
- Impervious to bleach, sunlight and repeated washing
- 100% Nitrile rubber backing for increased slip and skip resistance

USA Message Mat

Features

- Provide important messages while capturing tracked in dirt and moisture, reducing slip and fall accidents and maintaining your floor
- Thickness is 9.5mm (3/8")
- Standard size 3' x 5'1/4' x 6'1/4' x 8'
- Material: High twist, heat-set solution dyed nylon yarn with 100% Nitrile rubber backing
- Manufactured on a state-of-the-art-digital printer
- Static dissipative nylon Stain Stopper Technology
- 100% Nitrile rubber backing for increased slip and skip resistance

ECO Dust Control Mat *-Non machine wash*

Features

- High twist, heat-set solution dyed nylon yarn resists crushing, traps dirt and extends performance life of the mat
- Thickness is 9.5mm (3/8")
- Standard size 2' x 3'3/4' x 5'1/4' x 6'1/4' x 8'1/4' x 12'
- Material: High twist, heat-set solution dyed nylon yarn with vinyl backing
- Solid vinyl backing reduces mat movement and protects the floor

ECO Message Mat *-Non machine wash*

Features

- Thickness is 9.5mm (3/8")
- Standard size 2'x3'3/4' x 5'1/4' x 6'1/4' x 8'
- Material: High twist, heat-set solution dyed nylon yarn with 100% vinyl backing

Applications

Main Entrance , Inside Building Entrance ,Hallway Areas , Interior Walkways ,Toilet Entrance

PVC Chair Mat with gripper

- Commercial quality chair mats for office allow desk chairs to move effortlessly
- Protects floors and carpet
- Thickness is 3mm Material is PVC
- Size is 45" x 53" with Lip Size.
- Easily and smoothly roll from task to task in your workspace
- Clear vinyl allows carpet design and color see through

PVC Chair Mat with gripper-Roll

- Thickness is 3mm Material is PVC
- Roll Size is 4ft x 30ft
- Available in custom cut lengths.

PVC Chair Mat without gripper -Roll Size

- Commercial quality chair mats for office allow desk chairs to move effortlessly
- Thickness is 3mm Material is PVC
- Size is 45" x 53" with Lip Size.
- Protects floors and carpet
- Easily and smoothly roll from task to task in your workspace

DS Platinum Aluminium Mat

Features

- Versatile for modern construction applications
- Thickness :10 mm Recess depth : 14mm Weight : 12.50 kg/m²
- Suitable for heavy human traffic
- Accessible for wheeled traffic
- Heel Proof

DS Ultra Flexi Aluminium Mat

Features

- A modified version of DS Flexi Mat
- Greater carpet exposure
- Thickness :16 mm Recess depth : 20mm Weight : 13.40 kg/m²
- Optimal water absorption
- Excellent acoustic performance

DS Flexi Aluminium Mat

Features

- Able to roll up for easy cleaning
- Good water drainage system
- Thickness :16 mm Recess depth : 20mm Weight : 13.40 kg/m²
- Suitable for heavy human traffic
- Accessible for wheeled traffic
- Heel Proof

Country origin : Australia

INDUSTRIAL MAT

NON CONDUCTIVE SWITCHBOARD MAT

Coconut Husk Vinyl Coir Mat

Features :

- Natural Fibres embedded on high quality vinyl backing
- Thickness is 15mm Material is 100% Coconut Fibre Coir with vinyl backing.
- Absorb grease, oil, moisture readily.
- Scrape and clean dirt,grit and mud.
- Excellent scrubbing and moisture absorption
- To clean coconut husk mats, simply shake out, vacuum or hose down and air dry
- Use and Throw - Low cost and highly effective
- Also available in custom cut sizes and lengths

Application

Oil/Gas industry, shipyards,engine rooms,workshops, ship board, beach resorts, Golf/country clubs, construction sites,factory problem areas.etc

Cleanroom Sticky Mat

Features :

- Cleanroom sticky mats are made of polyethylene film. Sticky mat provide a tacky surface which remove dirt & debris off shoe soles before enter a sanitary sensitive (clean room) environment.
- Thickness is 0.035mm Material is Low Density Polyethylene.
- Size is 24" x 36" / 26" x 45" Packing is 30 Sheets x 8 mats x ctn
- The fast, convenient, reliable way to clean shoe soles before enter the clean room.

Application : • Clean room or a sanitary-sensitive room and also not limited to any areas required high sanitary environment, i.e. Labs, office entrance, dust/dirt free environment production entrance and widely used in industries such as electronics, medical appliance, computer, instrument, pharmaceutical, aerospace, especially in the semiconductor factory

3M Safety Walk Tape

Features :

3M Safety-Walk Slip-Resistant Medium Resilient Tapes And Treads - 310 / 370

- For barefoot - or shoe-traffic areas

3M Safety-Walk Slip-Resistant General Purpose Tapes And Treads 610 / 620B / 630B

- For light to heavy shoe-traffic areas.

3M Safety-Walk Slip-Resistant Conformable Tapes And Treads - 510 / 530

- For irregular or contoured surfaces in light to heavy shoe-traffic areas.

Electrical Insulating Mat

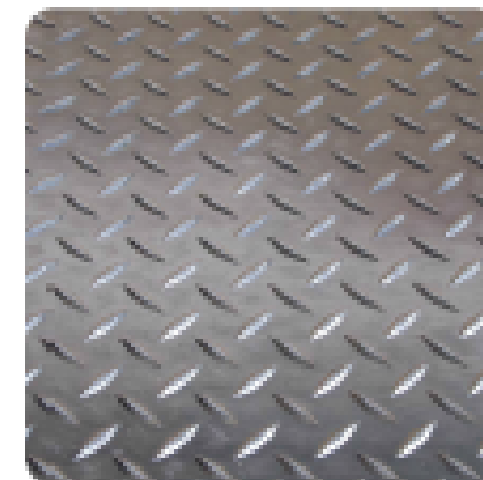
Features :

- Switchboard Rubber Mat are manufactured as per the latest IEC 61111:2009 Live Working standard.
- Electrical Switchboard Matting are used as floor coverings in areas of high voltage applications for the safety of users
- from dangerous electrical shock.
- Substation Rubber Mat are flame-retardant.
- was test under by TNB Labs Sdn Bhd & SGS, complied

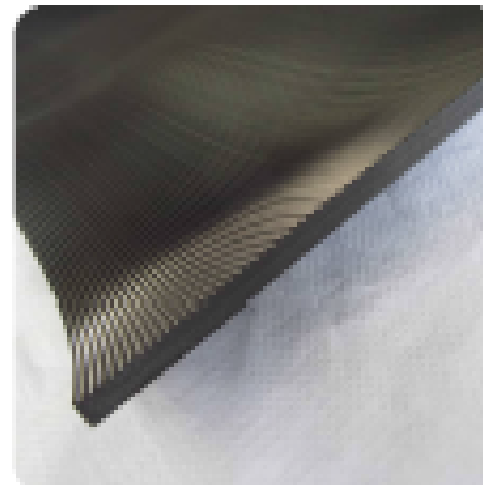
- Material Type: Natural Rubber (NR, SBR)
- Specific Gravity: $\pm 1.6\text{g/cm}^3$
- Hardness: 65 ± 5 Shore-A
- Elongation: $\pm 280\%$
- Tensile Strength: ± 4 Mpa

TNB LABS SDN BHD TEST CERTIFICATES (4nos) :

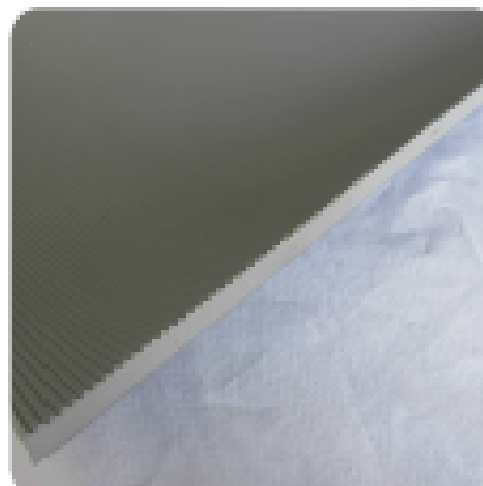
- 1) IEC 61111:2009 - Cert. No: TNBR/HVLT-2019-08/001 For NC10KV Electrical Insulating Mats Class 0 Withstand Voltage (10kV)
- 2) IEC 61111:2009 - Cert. No: TNBR/HVLT-2019-10/006 For NC20KV Electrical Insulating Mats Class 1 Withstand Voltage (20kV)
- 3) IEC 61111:2009 - Cert. No: TNBR/HVLT-2019-09/001 For NC30KV Electrical Insulating Mats Class 2 Withstand Voltage (30kV)
- 4) IEC 61111:2009 - Cert. No: TNBR/HVLT-2019-09/002 For NC50KV Electrical Insulating Mats Class 4 Withstand Voltage (50kV)



Model No : NC10KV (Low Voltage)
 Size : 5mm x 1m x 10m
 Color : Black
 Design : Diamond Plate
 Matting Class IEC 61111:2009 Withstand Voltage : Class 0
 Dielectric Test Voltage : 10,000V
 Nominal Maximum Use Voltage : 1,000 VAC



Model No : NC20KV
 Size : 9mm x 1m x 6m
 Color : Black
 Design : Corrugated
 Matting Class IEC 61111:2009 Withstand Voltage : Class 1
 Dielectric Test Voltage : 20,000V
 Nominal Maximum Use Voltage : 7,500 VAC



Model No : NC30KV
 Size : 8mm x 1m x 6m
 Color : Grey
 Design : Corrugated
 Matting Class IEC 61111:2009 Withstand Voltage : Class 2
 Dielectric Test Voltage : 30,000V
 Nominal Maximum Use Voltage : 17,000 VAC

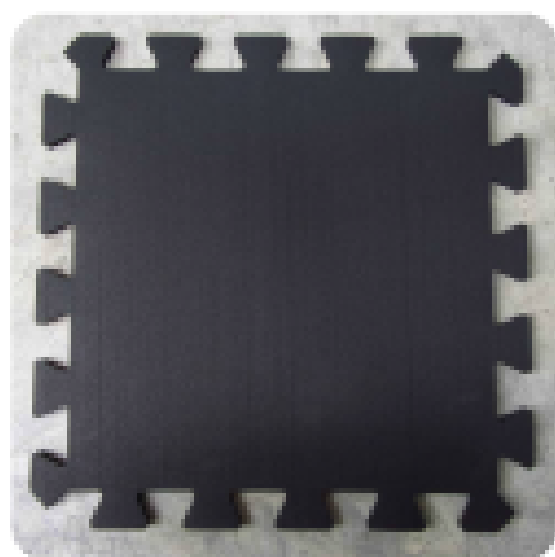


Model No : NC50KV
 Size : 12mm x 1m x 6m
 Color : Grey
 Design : Plain
 Matting Class IEC 61111:2009 Withstand Voltage : Class 4
 Dielectric Test Voltage : 50,000V
 Nominal Maximum Use Voltage : 36,000 VAC

Application :

Around electric sub-stations, transformers and switches, electrical panels, engine and generator rooms.

EXERCISE MAT



Interlocking Gym Mat

Features :

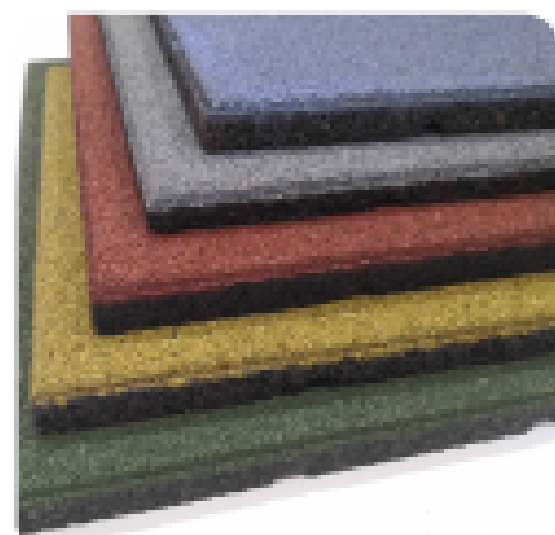
- Designed to provide anti-slip resistance, reduce noise absorption, control heavy-weight lifting and many more.
- Thickness is 10-15mm Material is SBR Rubber Granules Size is 50cm x 50cm
- It keeps your subfloor protected from scuffs, scratches and cracks.
- Shock absorbent and water resistant.
- Low life cycle cost, easy to install and maintain.
- No glue down installation is needed, puzzle lock system.
- No bad odor & free from specific hazardous chemicals.



Standard Rubber Tiles / Outdoor Playground Tiles

Features :

- can increase stability, reduce body impact and boost plyometric power. It holds the weight of heavy machinery for ultimate safety and protection easily.
- Thickness is 20-25mm Material is SBR Rubber Granules
- Size is 50cm x 50cm / 100cm x 100cm
- The perfect solution for weight rooms for extra shock and sound absorption.
- Waterproof and will not absorb water.
- It can be install with glue down or without if it's wall-to-wall.
- No bad odor & free from specific hazardous chemicals.



Martial Arts Mat (Taekwondo Mat)

Features :

- Tatami pattern on the surface gives anti-slip properties. Two reversible color (Blue Red & Green Yellow) enables it to use both sides.
- Thickness : 25mm Pattern is Five line pattern
- Thickness : 30-40mm Pattern is T pattern
- Size is 1m x 1m
- Colour available : Blue red / Green Yellow
- Interlocking design, extremely light weight and do not require any adhesive to install.
- Protects from any injuries during playing.
- Easy to clean.
- No bad odor & free from specific hazardous chemicals.



Kindergarten Eva Foam Mat

Features :

- Tatami pattern on the surface gives anti-slip properties. Come with two border strips per piece
- Thickness : 10mm Pattern is T pattern
- Thickness : 12mm Pattern is Diamond
- Size is 60cm x 60cm
- Interlocking design, extremely light weight and do not require any adhesive to install.
- Protects from any injuries during playing.
- No bad odor & free from specific hazardous chemicals.

CAR MAT



Ecoformat Car Mat (Set)

Features :

- Water resistant, resists soiling and most stains.
- Thickness is 18mm+-. Material is PVC
- Set Size : 60cm x 320cm/roll
- No rubber smell like those sold at normal accessories shop.
- It's free from specific hazardous chemicals.
- Heavy duty and thickness contributes comfortability.
- Finest grade & attractive colours.
- Specially customised to your preferred designs & requirements.
- Excellent dirt trapping capability.
- Open wire ring, dust proof. Easy to cleaning and maintain, shake or wash off with a hose.



Ecoformat Driver Mat

Features :

- NON toxic heavy metals, NO bad odour, NOT release formaldehyde, NOT release VOCs, NOT release VOCs under high temperature.
- Thickness is 18mm+-. Material is PVC
- Standard Size : 60cm X 80cm/pc
- Heavy duty and thickness contributes comfortability.
- Finest grade and attractive colours.
- Excellent dirt trapping capability.
- Open wire ring, dust proof. Easy to cleaning and maintain, shake or wash off with a hose.



Ecoformat Car Mat in roll with Spike Backing

Features :

- Roll Size : 1.2m x 9m
- Also available in custom cut sizes and lengths



Ecoformat Car Mat in roll with Super Grip Backing

Features :

- Roll Size : 1.2m x 9m
- Also available in custom cut sizes and lengths



Rubber Edging

Features :

- The advantage of rubber edging is to prevent floor mats from damage, not easily spoil and long lasting.
- Low/ Medium/Heavy
- Floor mats with the rubber edging will more stable and station at placing area.